



* All images in this datasheet are for illustrative purposes only and may differ from the actual product.

LG LED All-in-One Smart Series LAEC

LG LED All-in-One Smart Series

1 All-in-One LED Screen

Built-in Speaker

Dedicated Accessories

Easy Installation Quick Maintenance

Compatible with **LG One:Quick|Share**

Cabinet	LAEC
Inch	136"
Pixel Pitch	1.56 mm
Brightness	500 nit
Screen Resolution	1,920 × 1,080
Serviceability	Front
Speaker	Built-in
Controller	Embedded



All-in-One LED Screen with Built-in Speaker

The LAEC series is a 136-inch large screen which is offered as an all-in-one package including an embedded controller and built-in speaker. Eliminating the prejudice that LED displays are difficult and complex to install, it doesn't require controller connections or module configuration. After a simple installation process, all you need to do is to turn on the screen with a remote control like home TV.

High Performance with webOS

Built-in Quad Core SoC (System on Chip) can execute several tasks at once for providing smooth content playback. Also, LG webOS Smart Platform enhances user convenience with intuitive GUI and provides to SI or/and developers simple app development tools* such as SDK (Software Development Kit), SCAP, sample applications.

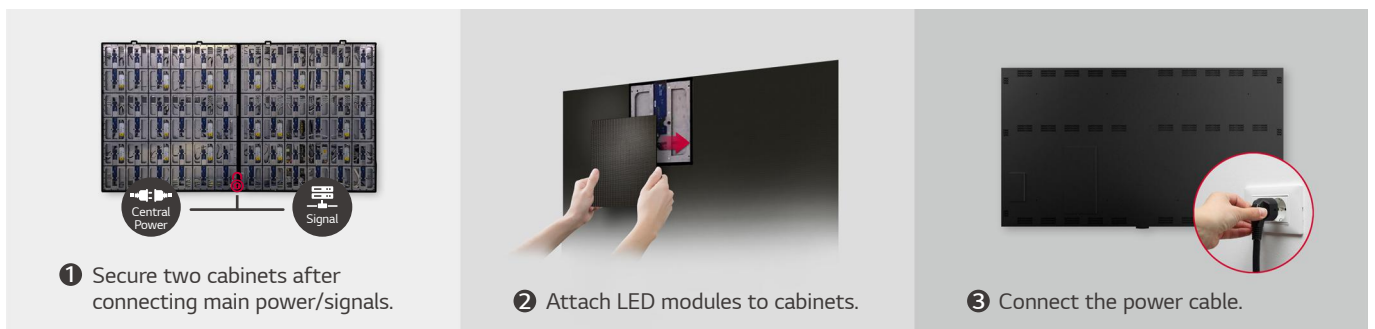
* The webOS Signage Developer site (<https://webosignage.developer.lge.com>) provides SDK tools and documentation for creating apps on LG Digital Signage. This is only open to partners.



LG's Wireless Screen Sharing Solution, LG One:Quick|Share

LG One:Quick Share is a wireless screen sharing solution available through the LAEC series, USB transmission unit, and its app. You can simply share personal PC screen to the display with it's USB dongle button and embedded Wi-Fi*, and can adjust the basic setting values (volume, picture mode, auto bright, etc.) of the connected display without a remote control. Also, the Office Meeting Mode** helps you to display the agenda, note before the meeting starts.

* Users need to set up SoftAP enabled at Network Menu of the Signage.
 ** Users can enable Office Meeting Mode at EZ Setting Menu of the Signage.
 *** LG One:Quick Share needs to be purchased separately.



Easy Installation

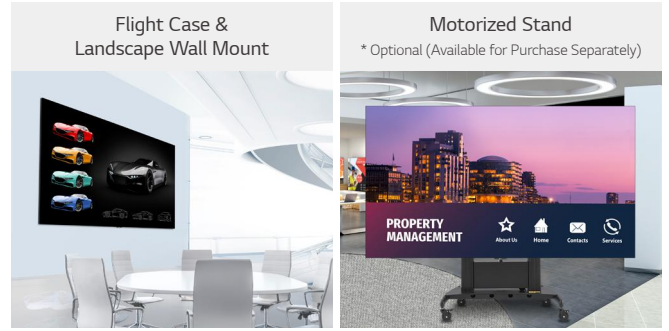
The installation process of the All-in-One Smart series is very simple. After securing two cabinets which are included in the flight kit, attach each LED display module to them. Lastly, plug in the power cable. This simple installation saves time and labor, thereby making users handle the LED screen with ease.

* Fixing screws or installing wall mount / accessories is needed additionally.



Quick Maintenance

In case of failure related to the LED module or the system board, it can be serviced from the front. The LED module can be simply detached by the provided magnetic tool and replaced quickly without cabling.



Dedicated Installation Accessories

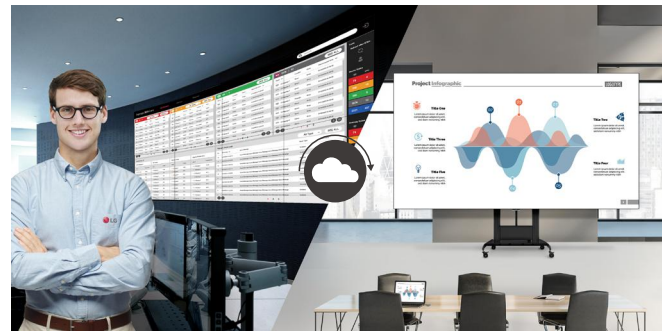
The product is offered with the flight case which includes every necessary component including the landscape wall mount and tools for installation. The motorized stand is provided as an option, so that you can easily place it depending on your installation sites. With this stand, you can adjust a height of the screen including stand from 2.0 m to 2.5 m.



Compatible with AV Control Systems

The LAEC series supports Crestron Connected®* for high compatibility with professional AV controls to achieve seamless integration and automated control**, boosting business management efficiency.

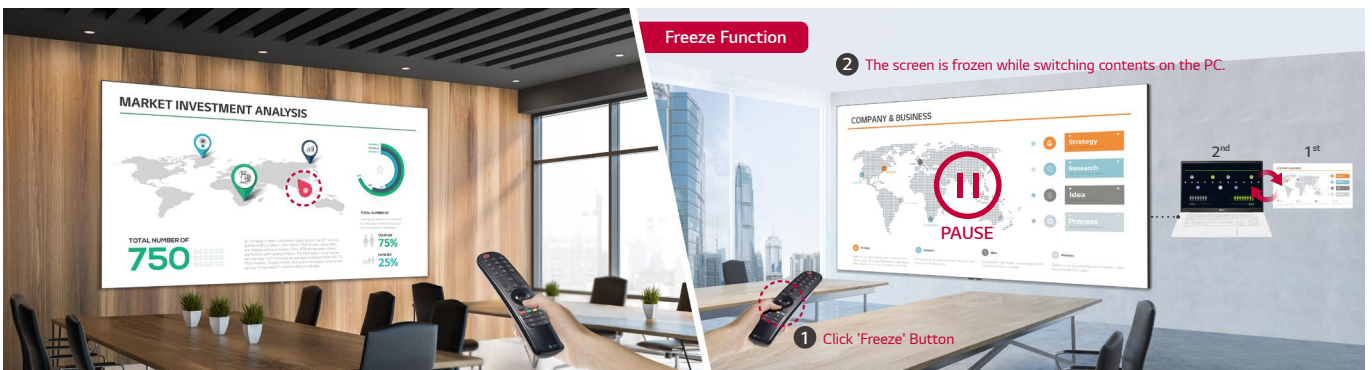
* Initial setting from display is required for Crestron Connected® compatibility.
 ** Network based control



Real-time LG ConnectedCare

Maintenance is easy and fast with the optional LG ConnectedCare* service, a cloud service solution provided by LG. It remotely manages the status of displays in client workplaces for fault diagnosis and remote-control services, enabling the stable operation of clients' businesses.

* The availability of LG ConnectedCare differs by region.



Magic Remote for Easy of Use

With the LG Magic Remote, you can select and run the menu of the signage just like using a mouse and its cursor can be used as a laser pointer. In addition, through the newly added 'FREEZE' button on the remote control, users can temporarily freeze the screen while switching contents on the PC, so that users are able to have uninterrupted meetings without exposing its switching process.

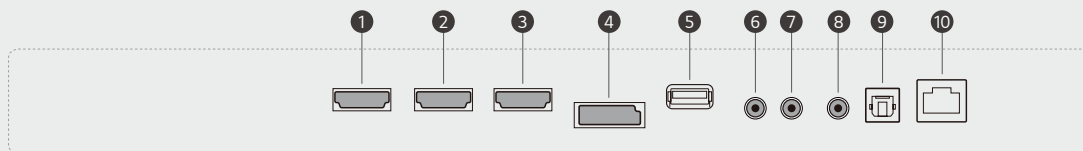
* LG Magic Remote needs to be purchased separately.
 ** The FREEZE function is only available when the LAEC is connected to an external input signal.

SPECIFICATIONS

		LAEC015-GN	LAEC015-GN2
Physical Parameters	Pixel Configuration	Signage SMD	Signage SMD
	Pixel Pitch (mm)	1.56	1.56
	Screen Resolution (W × H)	1,920 × 1,080	1,920 × 1,080
	Module Dimensions (W × H, mm)	250 × 281.25	250 × 281.25
	No. of Modules per Screen (W × H)	12 × 6 (Total 72)	12 × 6 (Total 72)
	Screen Dimensions (W × H × D, mm)	3,004 × 1,692 × 36.5 (Thickest 70)	3,004 × 1,692 × 36.5 (Thickest 70)
	Screen Surface Area (m ²)	5.06	5.06
	Screen Weight (kg)	129	135
	Physical Pixel Density (pixels/m ²)	409,600	409,600
	Flatness of Cabinet (mm)	±0.2	±0.2
	Cabinet Material	Aluminum	Aluminum
Service Access	Front	Front	
Optical Specifications	Brightness	500 nit	500 nit
	Color Temperature (K)	3,200 - 9,300	3,200 - 9,300
	Visual Viewing Angle (Horizontal)	160	160
	Visual Viewing Angle (Vertical)	160	160
	Brightness Uniformity	98%	98%
	Color Uniformity	±0.015 Cx,Cy	±0.015 Cx,Cy
	Contrast Ratio	3,000 : 1	3,000 : 1
	Processing Depth (bit)	16	16
Electrical Specifications	Power Consumption (W/Screen, Max.)	2,000	1,700
	Power Consumption (W/Screen, Avg.)	800	560
	Power Consumption (W/m ² , Max.)	395	336
	Power Consumption (BTU/h/Screen, Max.)	6,824	5,801
	Power Consumption (BTU/h/Screen, Avg.)	2,730	1,911
	Power Consumption (BTU/h/m ² , Max.)	1,348	1,146
	Power Supply (V)	100 to 240	100 to 240
	Frame Rate (Hz)	50 / 60	50 / 60
	Refresh Rate (Hz)	≥2,880	≥2,880
Operation Specifications	Lifetime (Hours to Half Brightness)	100,000	100,000
	Operating Temperature (°C)	0 to +40	0 to +40
	Operating Humidity	<90% RH (without Condensation)	<90% RH (without Condensation)
	IP Rating (Front / Rear)	IP30 / IP20	IP30 / IP20
Speaker	Built-in (9W + 9W)	Built-in (9W + 9W)	
Certification	CE, FCC, ETL, CB	CE, FCC, ETL, CB	
Environment	RoHS, REACH	RoHS, REACH	
Controller	Embedded	Embedded	

* Specifications are subject to change without notice. Please make sure to check the product manual for details about product usage.

CONNECTIVITY



- | | | | |
|----------|--------------|-----------------------------|-------|
| ① HDMI 1 | ④ DP-IN | ⑦ RS-232C OUT | ⑩ LAN |
| ② HDMI 2 | ⑤ USB 2.0 IN | ⑧ IR & LIGHT SENSOR IN | |
| ③ HDMI 3 | ⑥ RS-232C IN | ⑨ OPTICAL DIGITAL AUDIO OUT | |

* Jack Panels may differ from the above image, so please contact LG sales team to verify before ordering.



Download
LG C-Display+
Mobile App

Google Play Store

- www.lg.com/global/business/information-display
- www.youtube.com/LGCommercialDisplay
- www.facebook.com/LGInformationDisplay
- www.linkedin.com/company/LGinformationdisplay
- twitter.com/LG_ID_HQ

LG may make changes to specifications and product descriptions without notice. Copyright © 2022 LG Electronics Inc. All rights reserved. "LG Life's Good" is a registered trademark of LG Corp. The names of products and brands mentioned here may be the trademarks of their respective owners.